

LED controller

Specification



Before you use the LED controller, please read this file first and save it for future

We will struggle and serve for the booming development of LED industry!

BX-5E2

Statement

Any companies or privates cannot copy, transcribe or translate part or whole content of this file without our written permission. And cannot use it on any business or benefit filed with any forms.

The specifications and information which are mentioned on the file is for reference only, if there's update, we will not inform you. This file is only for guidance, and all information will not be for any promises.

CATALOG

Brief Introduction.....	2
About Software.....	2
Characteristics.....	2
Guiding.....	3
Safety Notes.....	3
Function instruction.....	4
Control size.....	4
Dynamic zone.....	4
Multi area arbitrary collocation.....	4
Timing sending programs.....	5
Timing power on/off.....	5
Test button.....	5
Automatic Correcting Time.....	5
Colorful border and stunt.....	6
Sensor.....	6
Multilingual.....	6
Secondary development.....	6
technical specifications.....	7
Diagram.....	8
Interface.....	9

Brief Introduction

Thanks for ordering LED control card. The design of the control card is according to the international and industrial standard, but if the operations are incorrect, it will probably bring you personal injury and financial harm. As to avoid these and win more from your equipment, please obey the specifications of this file.

About Software

Cannot do any modification, decompilation, disassembling, decoding or reverse engineering on our software, it's illegal.

Characteristics

- ◆ Based on strong hardware platform, support large size led display screen with best performance.
- ◆ On-board 100M Ethernet Interface, MAC bindings Mechanism, Ethernet auto-connection.
- ◆ Support PC direct connection/cross-Ethernet connection/cross-internet connection
- ◆ On-board USB interface, support U disk for downloading display file.
- ◆ Flexible and rich display control, high cost performance.
- ◆ 3.5V- 6.5V wide voltage range. -40°C~80°C wide work temperature.
- ◆ Support software update online.
- ◆ Support temperature sensor /temp&humidity sensor/noise sensor.

Guiding

Safety Notes

- ◆ Input voltage is 5V, voltage range is from 3.5V- 6.5V please make sure the quality of the power supply of BX-5E series.
- ◆ Please make sure that all the power supply cables are plugged off when you want to connect or plug off any signal or controlling cables.
- ◆ Please make sure that all the power supply cables and signal cables are plugged off when you need to put in or take off the hardware equipment.
- ◆ Please make sure the environment is clean, dry and ventilated when you use this product, also, do not put this product to a high temperature and wet environment.
- ◆ This product is electronic products, please keep away from fire, water source and flammable&combustible products.
- ◆ There's high pressure components in this products, please do not open the box and repair it by yourself.
- ◆ Turn off the power supply immediately when you find smoking, peculiar smell or something unusual. And contact with us soon.

Function instruction

BX-5E series support all kinds of super large intel screen and cluster display system.

Based on network application, support LAN and internet. A best choice for single screen or cluster display system. Meet all kinds of complex requirements.

Outstanding Features:

Based on strong hardware platform, support super large size led display screen

The max length ≤ 8192 Pixels, the max height ≤ 1024 Pixels , Total pixel $\leq 4096K$

When used together with HUB512-T8 or HUB512-T12, each 50PIN interface can support 512 pixels in height. If the height of the display is less than 256, please use together normal hub.

Support dual color display, support smart scan. Easy to adapt to a variety of special modules and full-color modules;

Added new "Smart search IP / automatically search device " function .Support 32 areas /512 programs Real-time preview the display effects, What You See Is What You Get on the display;

Control size

Based on powerful hardware platform the product, support large LED display, single color 512K: 4096*128, 2048*256, with a maximum width of 4096 points, the control area of flexible and abundant display function

Dynamic zone

Provide Java, SDK, c#, VB, C++ series of SDK file for static and dynamic area ; static area support t 32 areas, each static region does not influence each other; dynamic area also provides protocol development, support 4 dynamic area s(each dynamic capacity is 1M, the content do not save when power off., dynamic area can be associated with multiple static program, providing a variety of play modes.

Multi area arbitrary collocation

Support multi content display, use can add Image/text/animation/lunar calendar/digital

clock/analogue clock/timer/temperature/temperature & humidity/noisy,ect then rolling display these collocation contents .

Cluster management

Through a stable and efficient network control mode, users can seamlessly connect multiple LED screens which was distributed in different regions remote centralized management and maintenance,cluster release programs. In addition to send programs with the cluster, but also cluster settings boot, shutdown, correction time , time switch and brightness adjustment ect.Which can reduce the time user operation and management of the LED screen , greatly improve their work efficiency.

Timing sending programs

Supporting send programs regularly, users only need to set the time of the program in the software, and the program will send the program exactly according to the set time

Timing power on/off

The Ledshowtw software has the function of timer switch. After setting the boot and shutdown time, the computer will automatically turn on and turn off on time, so that we can make reasonable use of manpower and material resources, and greatly improve the service life and reliability of the display. When the user is inconvenient to operate on the side of the computer, the timing switch-gear can better realize the unattended function.

Test button

With the increases of use time , the quality of the screen will also change. Therefore, the large LED screen needs regular display quality detection and correction. The product has the function of self testing screen, the Users just need to flow simple operation steps, It can complete the brightness of the screen, , color detection, enabling customers to keep tracking of each LED the life of the screen.

Automatic Correcting Time

The system will automatically correction time according to the real-time time,just like the mobile phone and the computer, so that there is no need to manually calibrate the time and place the places that need

not be specially installed to the LED display, it can automatically correction the time, so as to ensure the uniformity of the time of all display terminals at any time.

Colorful border and stunt

The Ledshowtw software has build-in colorful border and super stunt, as guest editor broadcast programs provide rich and colorful eye-catching border and cool exciting stunt change. A variety of colorful border to meet customer needs and different editing applications, greatly improving the broadcast effect of the program.

Sensor

BX-5E series on-board temperature, humidity, brightness sensor interface, can accurately measure and display the temperature, humidity, brightness value. Provide accurate and accurate data reference for customers in places where temperature, humidity or noise need to be strictly controlled, so as to avoid unnecessary losses caused by improper temperature, humidity or noise control.

Multilingual

The system includes many kinds of font, such as multiple simplified Chinese text and traditional font, the software supports over 20 languages, such as English, Korean, Japanese, Greek, French and so on. The product is suitable for users from all over the world.

Secondary development

Support secondary development of static and dynamic regions. Provide c# and C++ complete development demo for static area and dynamic area , provide perfect and easy to use secondary development interface, users can easily use controller for secondary development, provide complete secondary development technology support services, meet the needs of customers in comprehensive area.

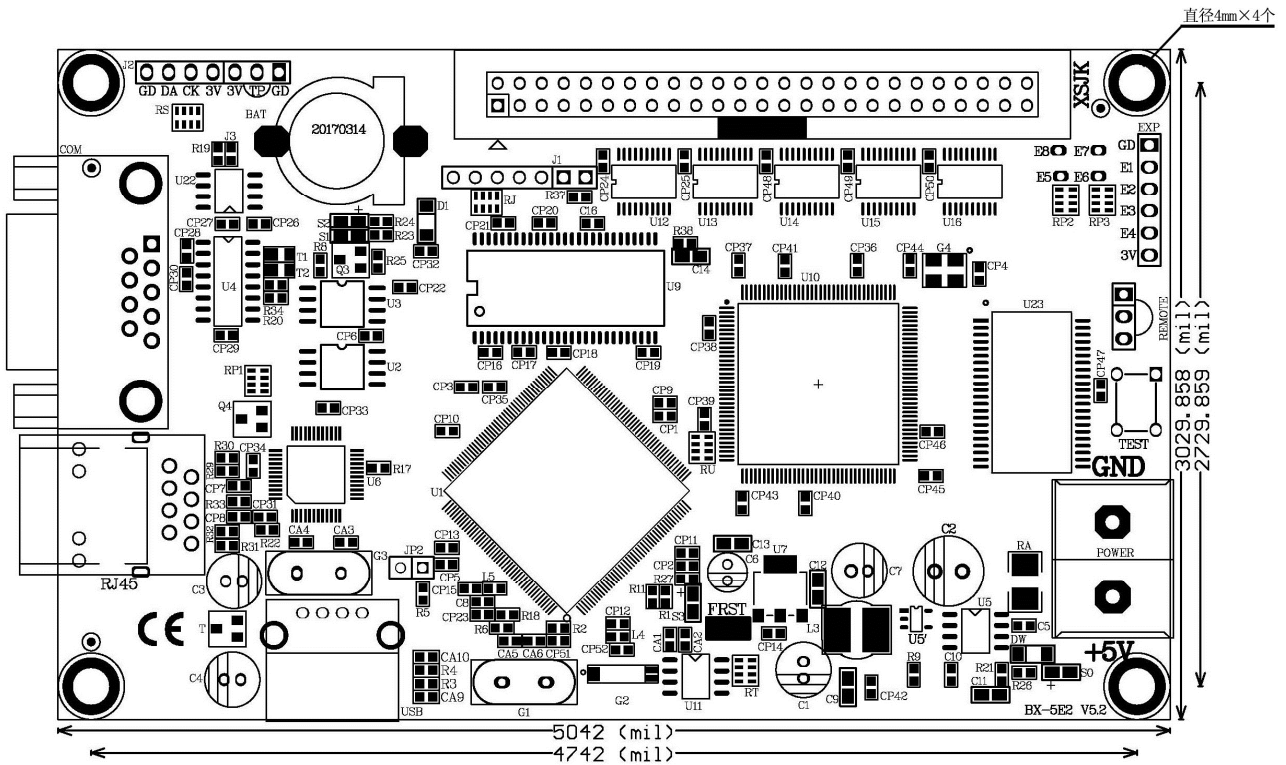
technical specifications

Product model	BX-5E2
Control area	Single/Dual color 512K:4096*128 2048*256
Memory storage	4MByte
Screen types	All kinds of single and double colors LED screen
Software function	Screens cluster management/multi-program/multi-areas display/multi-languages
Program type	Normal/Shared program
Program quantity	Support 512 programs,32 areas for each program
Area type	Image/text/animation/lunar calendar/digital clock/analogue clock/timer/temperature/
	temperature & humidity/noisy
Frame mode	Most advanced colorful / magic graphics frame/Area frame
Background	No support
Time mode	Analogue clock/digital clock/timing and counting-down timer (support multi-groups)
Communication mode	100M ethernet/RS232/RS485/USB,customized RS485.
	Two model: one is USB+Ethernet ,the another is USB+Serial
Interface	1 nos 50 PIN
Sensors supported	Temperature /humidity/noise
Remote control	Remote control program/lock screen/brightness adjustment/power on/off /screen test
Bright regulation	16 grades brightness, manual and auto-timing adjustment/remote control
Power on/off mode	Auto-timing powered on/off /software power on & off/remote power on&off
Voltage	5V (3.5V~6VwideVoltage)
Maximum power	≤2.5W
Temperature	-40°C~80°C
Secondary development	Provide the DLL and corresponding demos
Software	LedshowTW
User manual	LedshowTW software user manual
Adapter	HUB256-T8 HUB128-T8 HUB256-T12 HUB128-T12

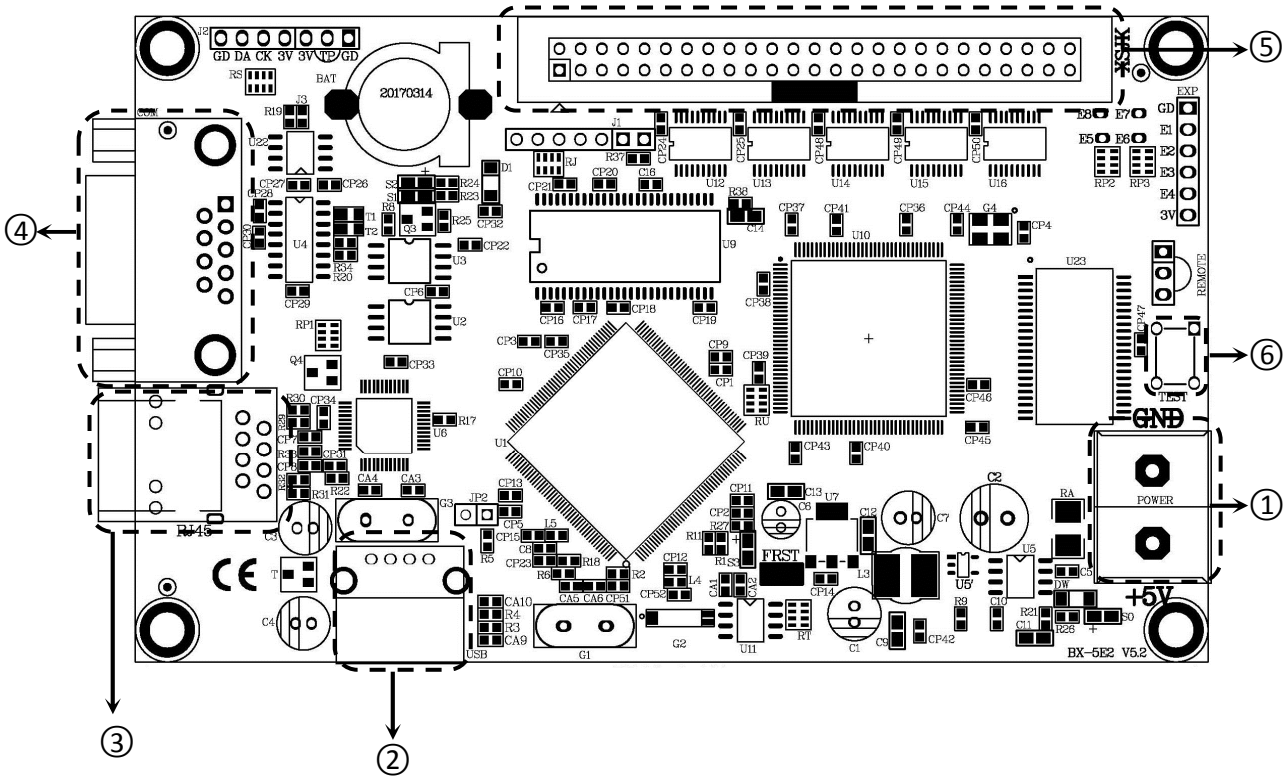
Specification of controller

Input voltage	5V (3.5V~6V) , Please ensure the power supply of BX-5Eseries
Power	≤2.5W
Working temperature	-40°C~80°C

Diagram



Interface



Interface		
1	Power	5V Power interface, DC voltage input, rated voltage 5V, support 3.5V~6V
2	USB port	USB interface, Support usb disk upload program
3	100M	Ethernet interface, Fast Ethernet, connected to the computer
4	Serial	RS232 RS485 serial interface
5	50PIN	50PIN (XSJK)
6	TEST	Test button

Contact Us

Shanghai ONBON Technology Co.,ltd (Headquarters)

Address: 7 Floor, Tower 88, 1199#, North Qinzhou Road, Xuhui District, Shanghai City, China

Tel Phone: 086-21-64955136

Fax: 086-21-64955136

Website: www.onbonbx.com

ONBON (Jiangsu) Optoelectronic Industrial Co.,LTD

Address: 1299#, Fuchun Jiang Road, Kunshan City, Jiangsu Province, China

Sales Contacts

Tel: 0086-15921814956 0086-15800379719

Email: onbon@onbonbx.com

Second Development

Tel: 0512-66589212

Email: dev@onbonbx.com

iLEDCloud

Website: <http://www.iledcloud.com/>



Public Wechat



ONBON APP